



Leigh Stationers' Primary Academy

**Curriculum Meeting
Monday 8th September 2025**

Year 4

Staff



Leigh
Stationers'
Primary Academy

- Mrs Chapman (Mon, Tues, Wed)
- Miss Steeves (Thurs, Fri)
- Mrs Behic - TA daily





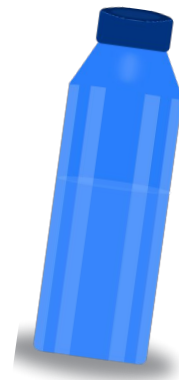
What children need

Children need PE kit on Wednesday and Friday

- If correct PE kit is not in school for lessons, children will have to borrow school kit

Children can bring water bottles although classroom cups are also provided.

Note: timetables are subject to change



Uniform

- Hair accessories – must be blue, black, white (school colours no larger than 8 cms)
- Shoes – no trainers or boots
- PE – Royal blue shorts / White t-shirt
- School bag - from Casey's school shop
- Earrings - small studs only, easy to remove for PE. If they cannot be removed, please provide your child with tape.



<https://www.caseysschoolwear.co.uk/primary-school/eastcote-primary-school.html>

We follow the Primary Years Programme (PYP)



Leigh
Stationers'
Primary Academy

The PYP is the framework used to deliver our curriculum which is informed by the National Curriculum.

Each module we study a new unit of inquiry.

The units are transdisciplinary which means they transcend traditional subject boundaries, allowing pupils to explore concepts and skills across different subjects.

For Module 1 our unit of inquiry's Central Idea is:

Theme: Romans

Central Idea: Human migration affects communities, cultures and individuals.

The lines of inquiry we will explore are:

- How we know about ancient civilisations
- The ways of past civilisations
- Roman migration and exploration
- The effects of migration now and then

Learner profile attributes

In the PYP there are 10 attributes which pupils work towards. These are being:

inquirers, communicators, thinkers, knowledgeable, principled, open-minded, caring, risk takers, balanced and reflective.

These skills we specifically teach to our pupils because we wish for all of our learners to display these attributes throughout their lives.

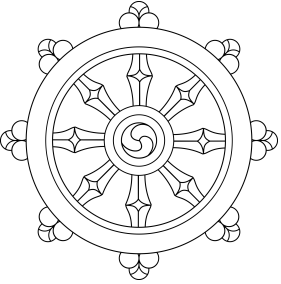
We celebrate these in our Friday assemblies.



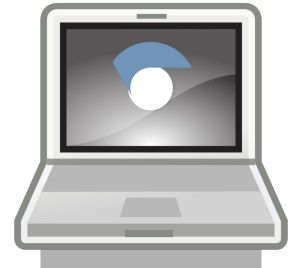
Year 4 learning Autumn Term 1



Leigh
Stationers'
Primary Academy



- ★ **English:** Romulus and Remus, Non-Chronological Reports, Features of a Myth, Character Descriptions
- ★ **Science:** States of Matter
- ★ **PYP - History:** Romans
- ★ **RE:** Hinduism
- ★ **PSHE:** Connections and Emotions
- ★ **Art:** Mosaics
- ★ **PE:** Football and Netball
- ★ **Computing:** Online Safety and Computer Networks
- ★ **ROMAN DAY**



Overview of learning across Year 4:



Leigh
Stationers'
Primary Academy

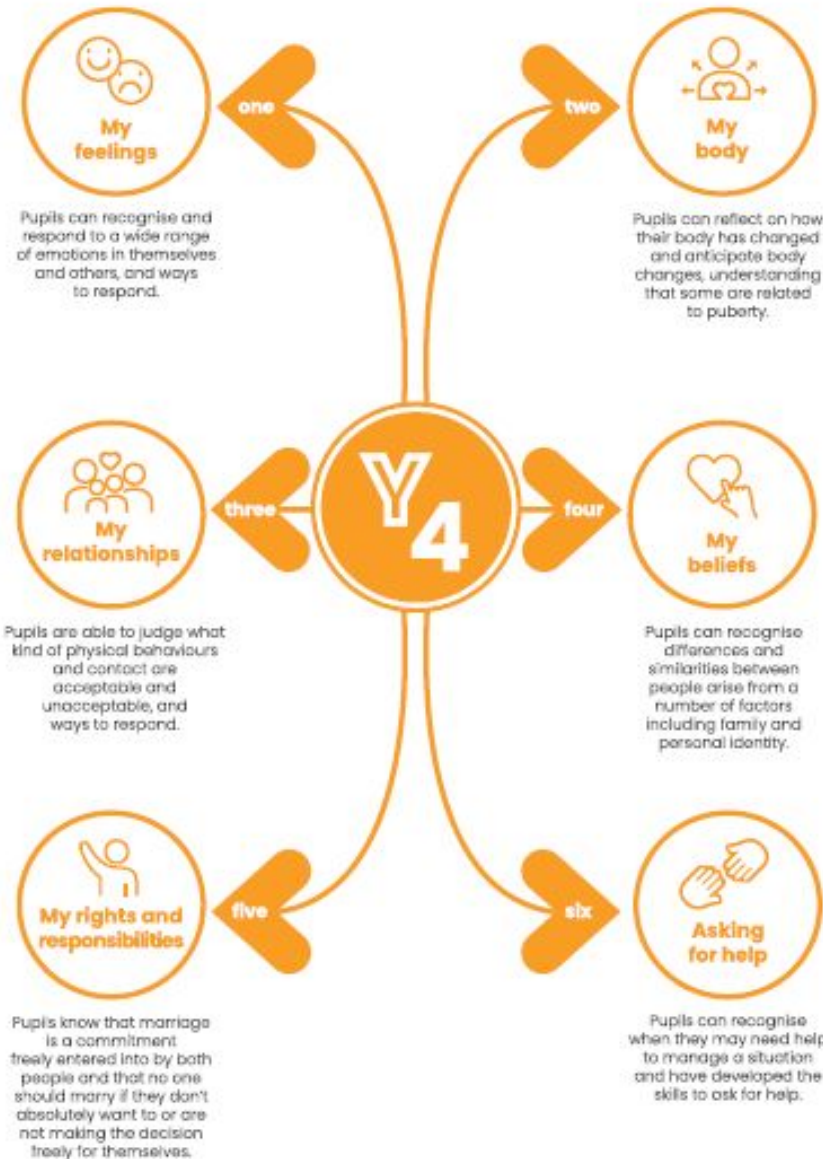
Our main topics:

- Autumn 1: The Romans
- Autumn 2: The Human Body
- Spring 1: The Anglo-Saxons
- Spring 2: Rivers
- Summer 1: The Vikings
- Summer 2: Tourism and the UK

Curriculum for Life

- Overview

- Periods – new 2022



How can you help at home?





Home learning



Leigh
Stationers'
Primary Academy

Year 4

- Reading at least 3 times a week, recorded in their reading record. Reading records must be in school everyday but will be checked every **Friday**.
- Maths – They will be given a Maths Champion target and this will be tested during the last week of the half term. In Year 4, children may be tested more frequently - they just need to ask.



Home learning

- Reading – Reading for Pleasure

We expect your child to read regularly at home, at least 15 minutes 3 times a week. Children need to complete their reading journal at least three times a week to say they have read.

We also encourage you to share a book with your child and talk about the story / characters.

- Reading Journals will be checked on a Friday.
- Spellings - Linked to Spelling Shed and Yr 2/3/4 word lists. Spellings will be put on Google Classroom on a Monday evening and children will be tested on the following Monday.



Home Learning



Leigh
Stationers'
Primary Academy

- Maths Champion

Your child's personal Maths Champion target will be sent home at the beginning of each half-term.

Please practise these frequently. Children will get time to practise their target in school as well.

Children will be tested on their target at the end of the half-term and will receive a sticker and a new target when the previous target has been achieved.

Google Classroom



Leigh
Stationers'
Primary Academy

- Every child has a login for Google Classroom. This can be found in the front of their reading journal.
- Children's Maths Champion targets will be updated on Google Classroom.
- Class activities and photos will be posted on Google Classroom



Maths Champion Google Classroom - for help with targets



Leigh
Stationers'
Primary Academy

- All Year 4 children will join this classroom in school this week
- You will see help with all targets on here including worksheets, games and advice



Times Table Practise - TTRockstars



Leigh
Stationers'
Primary Academy

Children to practise their Maths Champion targets on TTRockstars at least 3 times a week - this will be checked on a Monday.

To practise their current target, use 'Garage'

To revise / practise all times tables to 12x table use 'Soundcheck'.



Year 4 Multiplication Check

A statutory test for all children in Year 4 in England.

25 random times table questions from the 2x table to the 12x table

To practise for the check use 'Soundcheck' on TTRockstars - this will be exactly how the real check is. Even if your child knows all their times tables they need to go back and practise.

Children need to practise 3 times a week, this is checked on a Monday.

English tasks in school



Leigh
Stationers'
Primary Academy

- Spellings

Your child spellings, including common exception words and spelling patterns, will be taught and practised in school weekly.

- Reading tasks

Children will be set reading tasks on Google classroom that will be completed in school as part of Early Morning Work. These do not need to be completed at home.

Contacting Mrs Chapman or Miss Steeves



Leigh
Stationers'
Primary Academy

- If you have any questions or concerns, all communication must come via the school office either by email info@stationersprimary.latrust.org.uk or phone the office on 0208 856 1346.

All communications will then be passed onto us and dealt with accordingly.

Any questions?

