

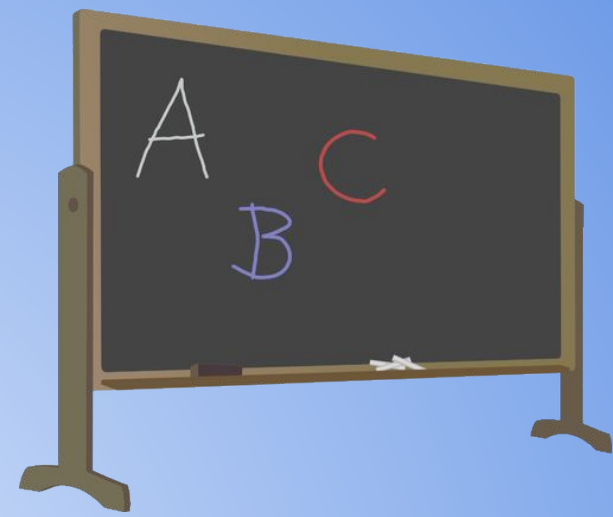


# Leigh Stationers' Primary Academy

**Curriculum Meeting  
Monday 8th September 2025  
Year 3**

# Staff

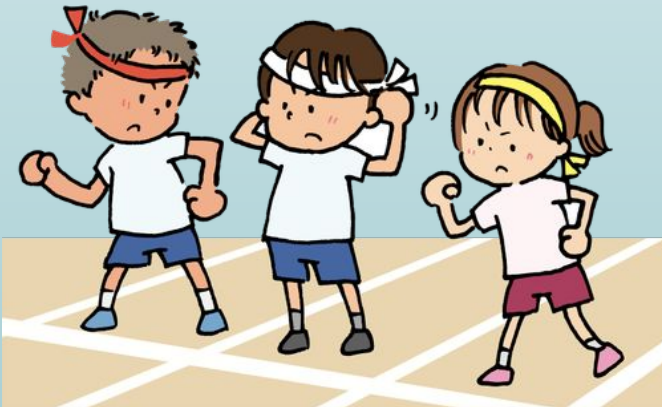
- Classroom teacher will be:  
Mr Thomas
- Classroom T.A will be:  
Mrs Martin



# What you need!



- Children need PE kits on a Wednesday (Mr Break) and Friday (Mr Thomas).
  - Children can bring in fruit, if they wish, for first play.
  - Water bottles must only be filled with water.
- \* Timetables are subject to change



# Autumn 1 overview

- Science: Rocks and Soils
- PYP: The Stone Age
- RE: Why is the Bible important for Christians today?
- Maths - Place value
- English - Writing a diary entry.

# PYP

## Units of Inquiry:

- Across Year 3 we study: The Stone Age, Natural Disasters, European Art, Being Unique, Equal opportunities and Ancient Egyptians



# Learner profile attributes

In the PYP there are 10 attributes which pupils work towards. These are being:

**inquirers, communicators, thinkers, knowledgeable, principled, open-minded, caring, risk takers, balanced and reflective.**

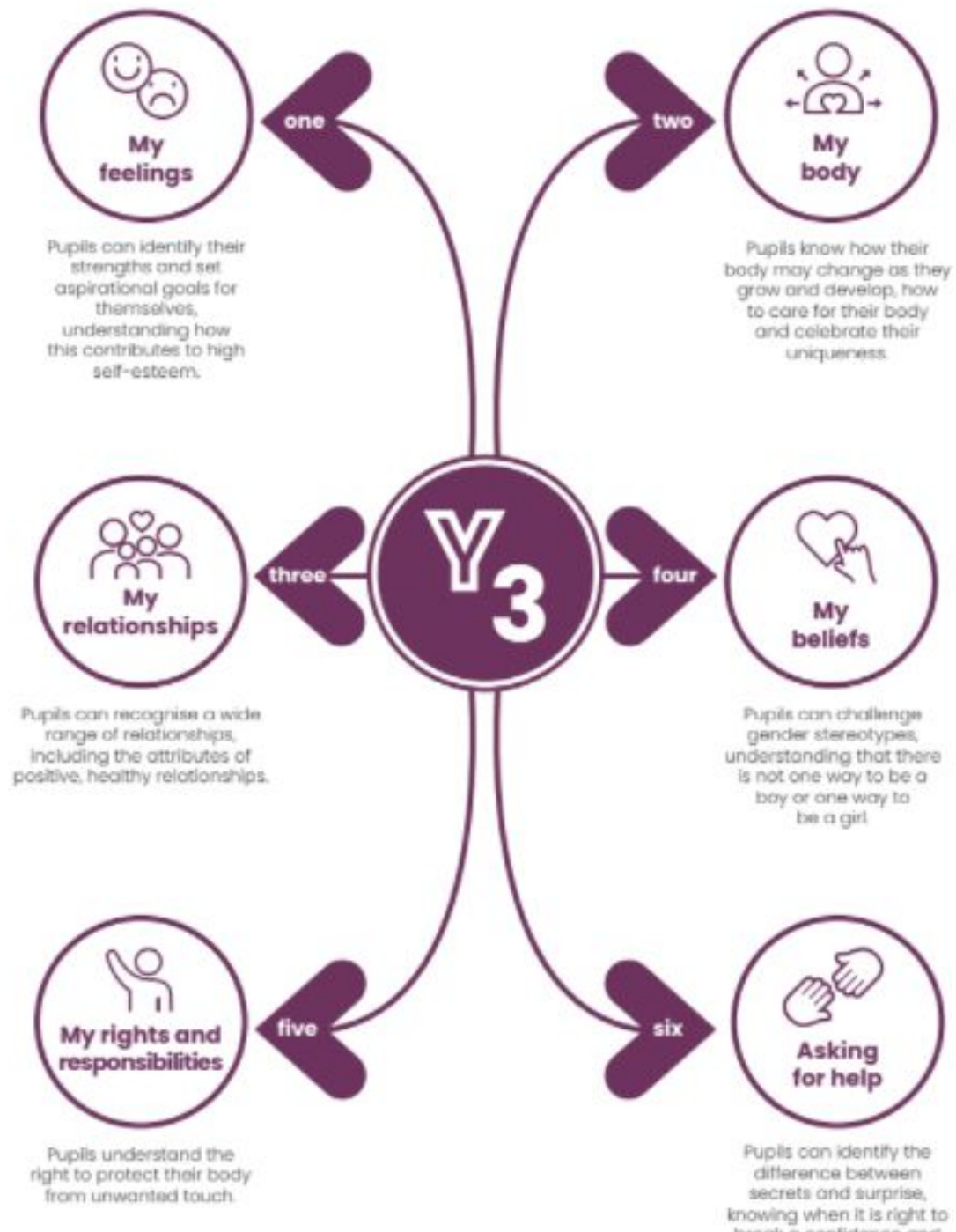
These skills we specifically teach to our pupils because we wish for all of our learners to display these attributes throughout their lives.

We celebrate these in our Friday assemblies.



# RSHE

## Overview □

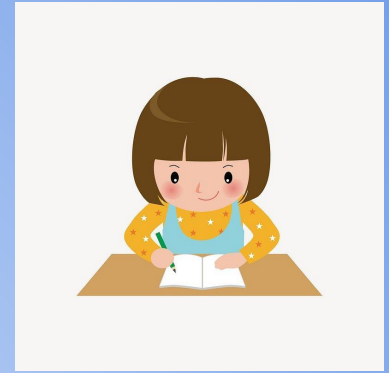


# How can you help at home?



# Home learning

## Year 3



- Reading at least 3 times a week
- Maths - They will be given a Maths Champion target which will be tested every week.
- Spelling- Spelling will go up on google classroom at the start of every week. Giving the students the opportunity to practice at home if they wish.

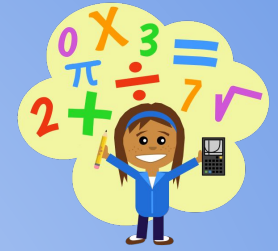
# Home learning



- **Reading - Reading for Pleasure**
- We expect your child to read regularly at home, at least 10 minutes 3 times a week. This should be recorded in their reading record by filling in the date, page and title columns.
- Reading records must be in school everyday but will be checked every Friday.

We also encourage you to share a book with your child and talk about the story / characters.

# Home Learning



## Mental maths

Your child's personal Maths Champion target will be uploaded to google classroom at the beginning of each half-term. Please practise these frequently at home both verbally and on TT Rockstars. Your child's login can be found on the first page of their reading record.

Children will be tested on their target every week and will receive a new target when the previous target has been achieved.

# Google classroom



Each child will received their Google logins and will joined the Year 3 Google classroom. This is where they will be able to access their times table results.

Google email and passwords can be found in the front of their reading journals.

# Uniform

- Hair accessories - must be blue, black, white or yellow (school colours) and no larger than approximately 8 cm in diameter
- Black Shoes - no trainers or boots.
- PE kit- please have your child's name on the front of their PE top
- If correct PE kit is not in school for lessons children will have to borrow school kit

[Caseys school wear](#)

# Important reminders summary

- PE kits - in school at all times
- Reading journals must be in school every day
- Read 3 times, for at least 10 minutes at home each week
- Children use Google classroom

# Contacting Mr Thomas

- If you have any questions or concerns, all communication must come via the school office either by email [info@stationersprimary.latrust.org.uk](mailto:info@stationersprimary.latrust.org.uk) or call 0208 856 1346.

All communications will then be passed onto myself and dealt with accordingly.

