



Leigh  
Stationers'  
Primary Academy

**Curriculum Meeting  
Monday 9th September 2024**

Year 1

# Welcome to Year 1!

Miss Davies - Class Teacher

Mrs Cooper - Teaching Assistant

Tuesday afternoons - Mr Brake for PE,

Mrs Smith, Curriculum for Life



# Routines/systems

- **Uniform** - please make sure your child's name is clearly labelled on all items of school uniform.
- **Shoes** - please make sure your child can take off and put on their school shoes by themselves.
- **PE days** - Tuesdays and Fridays. Please make sure your child has a full PE kit in school at all times. Jogging bottoms can be worn in the colder months.
- **Contact books** - Please ask your child to hand their contact book to me if you have written a note.
- **Fruit** - is free and available during morning play.
- **Milk** - available in the mornings but must be paid for via the Cool Milk website. <https://www.coolmilk.com/>
- **Water** - Water fountain outside our classroom or bring in a named bottle from home.

# Reading

- **Please listen to your child read as often as possible!** This is the best way you can help your child to progress.
- 10 minutes every day - where possible. Rereading a text will help to boost fluency.
- Book changing days are noted on the back of your child's reading record. **Children are reminded to put their books in the box to be changed. Books will only be changed when signed by an adult.**
- Ask your child questions about the book/characters/storyline, talk about the pictures and what might happen next.
- We really want to foster a love for reading - calm and peaceful time, one-to-one or shared with siblings.
- Never underestimate the power of reading to your child
  - a bedtime story is the perfect way to build this into a routine.



# Reading

## How to support your child when hearing them read

- Lots of praise when they are attempting to segment and blend.
- Many children at year 1 are able to segment a word - e.g. for the word 'slips' they will correctly say 's, l, i, p, s' but then are not quite ready to blend the sounds back together and will come up with a different word - 'splis', for example. When this happens, praise, encourage another go or model segmenting and blending the word yourself. **Repetition is key at this stage!** Re-reading a text will really help to build fluency and confidence.



# Phonics

- Children are taught to read using phonics and reading tricky words (common exception words that cannot be sounded out)
- We use Phonics International, as in Reception.
- We follow the spelling - work for year 1, outlined in the National Curriculum
- The phonics screening test/check will happen the week beginning Monday 9<sup>th</sup> June 2025.



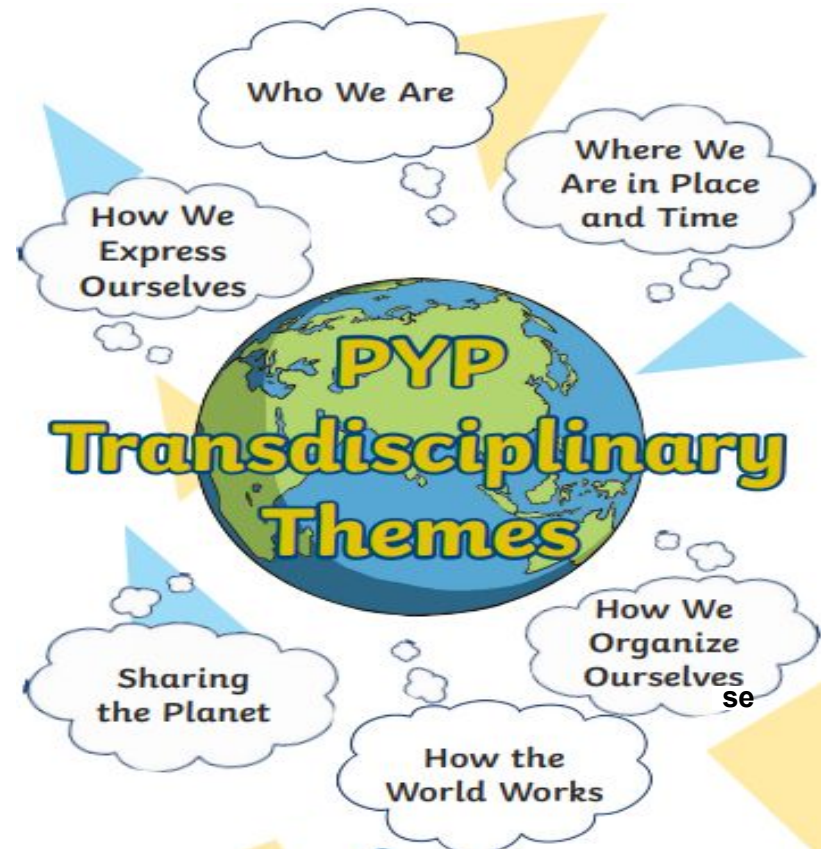
# Primary Years Programme (PYP)

We have introduced the Primary Years Programme (PYP), an International Baccalaureate (IB) programme of education.

We will use the PYP framework to deliver our curriculum, informed by the National Curriculum, but explored through transdisciplinary themes.

Here are the Transdisciplinary themes:

Through this programme pupils will further develop their knowledge, understanding of concepts across subject areas, and skills. Pupils will be encouraged to use their initiative to take ownership of their learning, thinking about how they can make a difference in their own lives, and beyond.





# Learner profile attributes

In the PYP there are 10 attributes which pupils work towards. These are being:

**inquirers, communicators, thinkers, knowledgeable, principled, open-minded, caring, risk takers, balanced and reflective.**

These skills we specifically teach to our pupils because we wish for all of our learners to display these attributes throughout their lives.





# Our current unit of inquiry

**Theme:** Who we are

**Unit of inquiry:**

We are all unique individuals who belong to a community.



**We will inquire into:**

- What makes me unique
- What it means to be part of a community
- How we belong to different groups
- My responsibility to my community



# Year 1 units of inquiry

**Autumn 1 - All about me**

**Autumn 2 - Toys from the past**

**Spring 1 - Ocean habitats**

**Spring 2 - Travel and transport (changes over time)**

**Summer 1 - Our school and the local area**

**Summer 2 - Seasides**

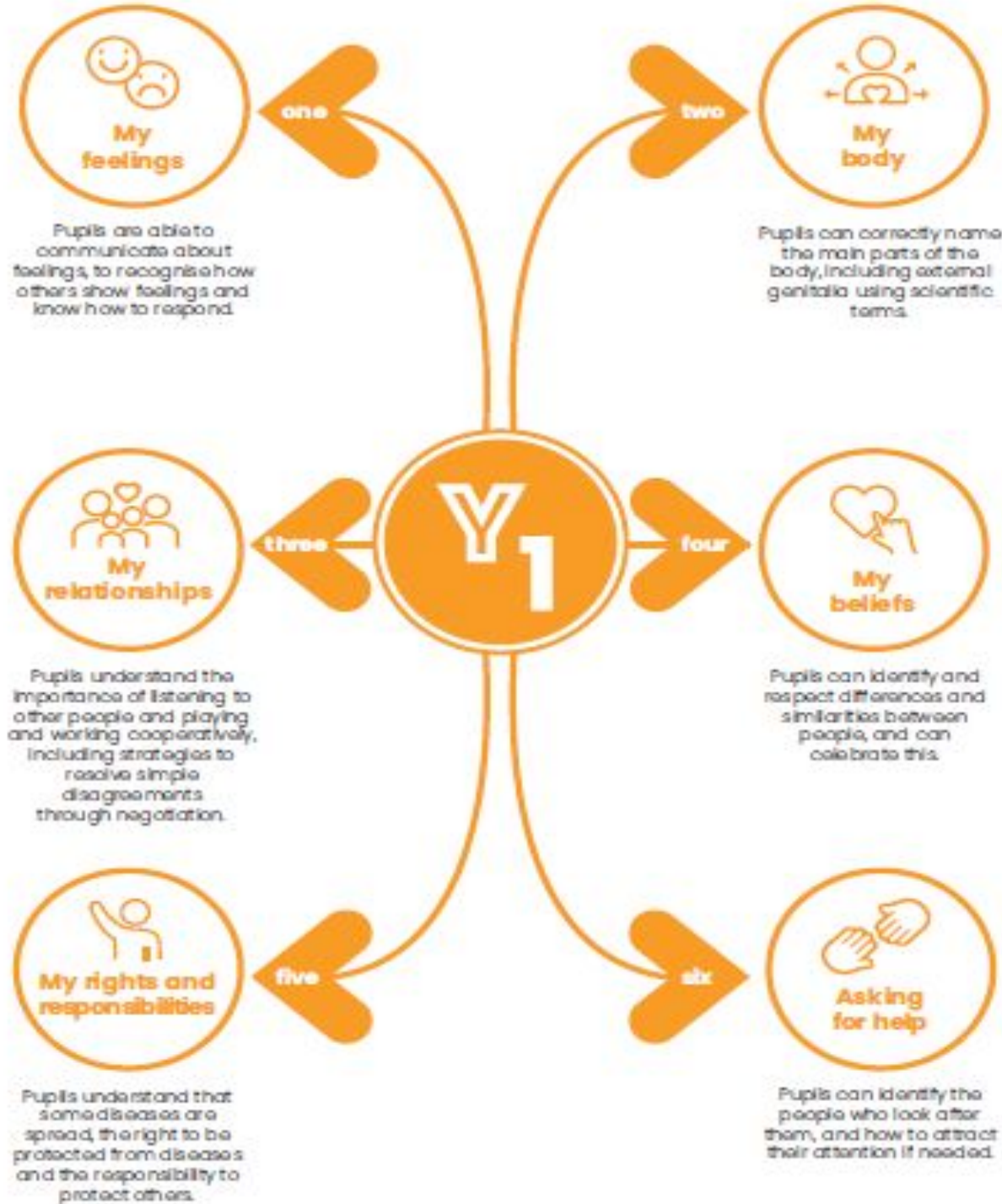
Title pages and photos

will be uploaded onto

Google Classroom for each unit.

# Curriculum

- Weekly PE sessions delivered by PE coach, Mr Brake
- Weekly Spanish session - Senora Hall
- Requirements from the Government have been outlined for the teaching of RSHE (Relationships, Sex and Health Education)



# Home learning

- 10 minutes of **reading** each night, where possible.
- The **maths champion target** is a mental math's target for your child to practice. They will be uploaded on to Google Classroom. I will also add the progression of maths champion targets so your child can move onto the next one, if more challenge is needed.
- Maths champion targets will be tested during the week before October half term. The targets are tested orally with a selection of random facts.
- Results and new targets will be uploaded on to Google Classroom.
- **Spellings** - the Year 1 Common Exception Words can be found in the Year 1 Google Classroom. This is a list of common words that do not follow any regular spelling rules, that just need to be learnt. The expectation is that children will spell the majority of these words by the end of Year 1.



# How can you help?

- **Hear your child read everyday** where possible - it really makes a huge impact on learning. Re-read the text to help improve fluency and build confidence.
- **Read a bedtime story to your child** - this helps to develop vocabulary, stimulates imagination and expands their understanding of the world.
- Encourage independence at home - for example changing clothes, taking socks and shoes on/off.
- Practice the Year 1 spellings and maths champion targets.
- Re-capping past maths targets to keep them fresh.
- Bedtime - please try to make sure they get enough sleep!
- Play games together. Encourage turn taking, patience and listening skills.



# Google Classroom

Your child will join our Year 1 2024 - 2025 Google classroom this week.

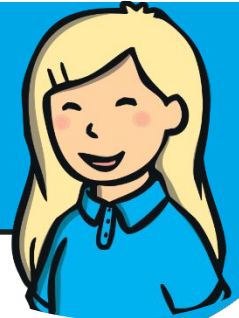


To access the classroom at home:

- Go to [classroom.google.com](https://classroom.google.com)
- Click on 'sign in'
- enter your child's email and password (these will be stuck inside the back cover of the reading records)
- In the 'classwork' tab, you will find a welcome note and these slides, our current unit of inquiry and the Year 1 common exception words
- Maths Champion assignments will be added this week.



# Please Remember



Please drop off/collect your child at the correct times.

Arrive 8:45am. Collect 3:15pm.

If you have any queries or questions, please contact me via a note in the contact book or by emailing the office.

Please use WhatsApp/Facebook mindfully.

**Thank you so much for your support with your child's learning; it really makes a huge difference.**